

MUD PUMP

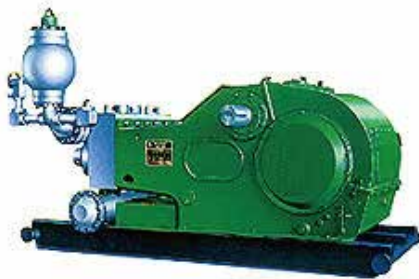
F Series Mud Pump

Jereh specializes in supplying quality mud pumps and mud pump parts.

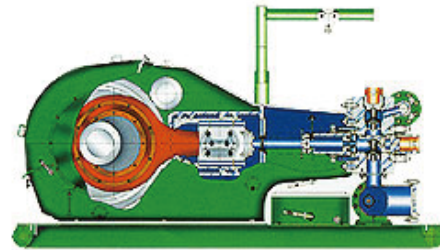
The made-in-China F Series mud pumps can meet the requirements of the same manufacturing technique and quality level as those of F series mud pumps of EMSCO, IDECO, GARDNER DENVOR, OILWELL etc. Now, F series mud pumps (from F-500 to F-2200) have been produced in batches and sold to many abroad oilfields. Your order for F series mud pumps is cordially welcome.

Jereh's export-orientated mud pump parts, including liners, pistons, piston inserts, valve inserts, oil seals, rod packing, fluid ends etc.. All of them meet or exceed DIN and API standards and have been exported to U.K., Germany, USA, Canada, Pakistan, Middle East, and so on.

We also supply mud pump parts according to drawings or samples supplied by our customers.



F Series Mud Pump



F Series Mud Pump

Specification of F Series Mud Pump

Model	JD-F500	JD-F800	JD-F1000	JD-F1300	JD-F1600
Type	Triplex Single Acting	Triplex Single Acting	Triplex Single Acting	Triplex Single Acting	Triplex Single Acting
Rated Power	500hp (373kw)	800hp(596kw)	1,000hp(735kw)	1,300hp(969kw)	1,600hp(1,193kw)
Speed (spm)	165	150	140	120	120
Stroke	7 ¹ / ₂ "(190mm)	9"(228.6mm)	10"(254mm)	12"(305mm)	12"(305mm)
Max. Liner Dia.	6 ³ / ₄ " (170mm)	6 ³ / ₄ " (170mm)	6 ³ / ₄ " (170mm)	7"(180mm)	7"(180mm)
Gear Type	Herringbone	Herringbone	Herringbone	Herringbone	Herringbone
Valve Pot	API-5 #	API-6 #	API-6 #	API-7 #	API-7 #
Gear Ratio	4.286:1	4.185:1	4.207:1	4.206:1	4.206:1
Suction Inlet	8"(203mm)	10"(254mm)	12"(305mm)	12"(305mm)	12"(305mm)
Discharge Inlet	4"Flange 5,000 psi	5"Flange 5,000 psi	5"Flange 5,000 psi	5"Flange 5,000 psi	5"Flange 5,000 psi
Lubrication	Forced & Splash				
Max. Pressure	3,945psi (27.2Mpa)	5,000psi (34.5Mpa)	5,000psi (34.5Mpa)	5,000psi (34.5Mpa)	5,080psi (35Mpa)
Overall Size(in)	144x106x86	156x79x66	163x89x70	174x121x78	181x129x106
Weight(kg)	9,770	14,500	18,790	24,572	24,791

3NB Series Triplex Mud Pump

3NB series triplex mud pump is one popular piston pump used for local market with local design, now it's also greatly required by Russia, CIS customers.



Technical Specifications for 3NB Triplex Mud Pump

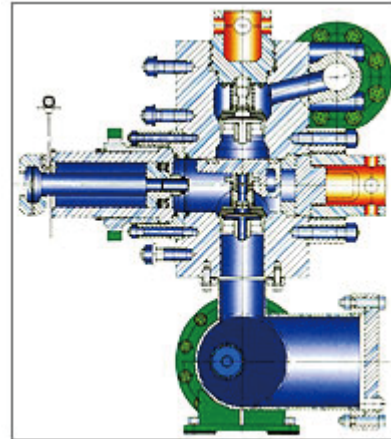
Model	JD-3NB3 50	JD-3NB5 00	JD-3NB60 0	JD-3NB80 0	JD-3NB10 00	JD-3NB13 00	JD-3NB16 00	JD-3NB22 00
Type	Triplex	Triplex	Triplex	Triplex	Triplex	Triplex	Triplex	Triplex
Input Power (kw/hp)	257 350	368 500	441 600	588 800	735 1,000	955 1,300	1,176 1,600	1,640 2,200
Rated Speed (spm)	130	120	135	130	125	120	120	105
Stroke (mm)	180	180	196	274	274	305	305	356
Max.Liner Dia. (mm)	Φ160	Φ170	Φ180	Φ180	Φ180	Φ190	Φ190	Φ230
Suction Inlet(mm)	203	200	200	254	254	305	305	305
Discharge Inlet(mm)	76	83	101	101	101	101	101	130
Gear Ration	4.483	4.696	4.696	3.482	3.482	3.657	3.657	3.152
Max. Pressure (Mpa/psi)	31 4,495	35 5,075	35 5,075	34.5 5,000	35 5,075	35 5,075	35 5,075	35 5,075
Drive Shaft Speed	582.8	563.52	633.96	435.25	435.25	438.84	438.84	369
Overall Size(mm)	3,600x 2,080 x2,015	3,600x 2,280 x2,080	3,900x 2,285 x2,085	4,600x 2,155 x2,052	4,600x 2,155 x2,052	5,250x 2,450 x2,625	4,720x 2,822 x2,660	6,000x 2,950 x3,250
Weight (kg)	8,058	9,484	11,000	17,200	18,000	23,000	27,100	38,800

MUD PUMP PARTS

Mud Pump Fluid End Part Design Feature

Mud pump fluid end assembly mainly consists of fluid end, valve assembly, liners and pistons.

All sealing parts are tightened, featuring good sealing performance. Vertical fluid end features good suction performance. Mud pump fluid end parts are interchangeable with abroad brands, such as EMSCO, IDECO, OILWELL, GARDNER DENVOR, NATIONAL, SKYTOP, OPI, WIRTH, WILSON pump parts.



Mud Pump Fluid End Assembly

Mud Pump Fluid End

Fluid end is made of forged alloy steel and three fluid ends of each pump are interchangeable. On customers' request, the fluid end surface can be nickel-plated to improve the abrasion resistance. Shear relief valve and discharge strainer are fitted at the discharge outlet.

Valve Assembly

The suction valve and discharge valve of F-series mud pump are interchangeable. F-500 mud pump uses API 5# valve, F-800/1000 mud pumps use API 6# valve. F-1300/1600/1600HL mud pumps use API 7# valve. D-2200/2200HL mud pumps use API 8# valve.

NOTE: When the working pressure of F-1600HL and D2200HL mud pumps exceeds 34.5MPa (5000Psi), special high-pressure valve assembly should be used.

Liner

Bi-metal liner can be used. The sleeve of liner is made of wear-resisting cast iron. The liner surface hardness can reach HRC60-65. Therefore, liners are wear resistant and corrosion resistant.

Piston and Piston Rod

Piston and piston rod are of slide fit and sealed with rubber seal rings. They are fastened with lock nuts to prevent the piston from loosing. Fluid end, liner, piston, valve and seat, valve spring, seal ring and gasket, valve cover and cylinder head fluid end assembly for F-800 and F-1000 mud pumps are interchangeable. Fluid end assemblies of F-1300 and F-1600 mud pump are selfsame.





Index-2016.10-V1/EN

Copyright © Jereh Global All rights reserved.



Jereh Global Development LLC

Add: No.9 Jereh Road, Laishan District, Yantai, P. R. China

Tel: 0535-6765628 6765630

Fax: 0535-6723171 6723172

Email: petroleum@jereh.com

Http: www.jereh.com