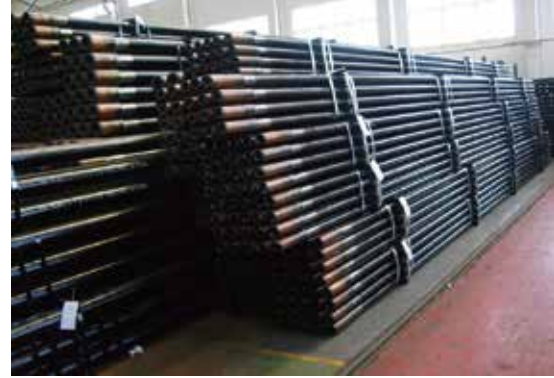


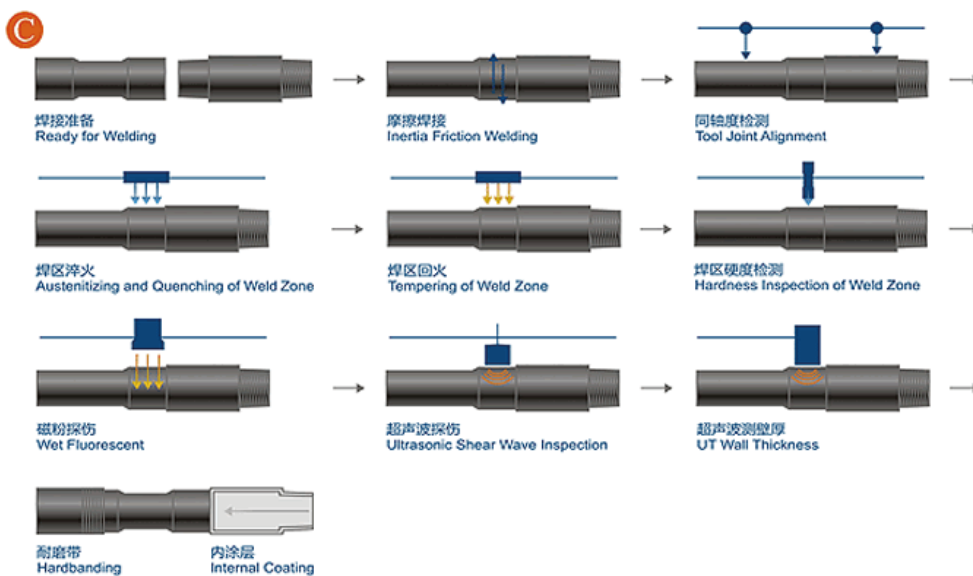
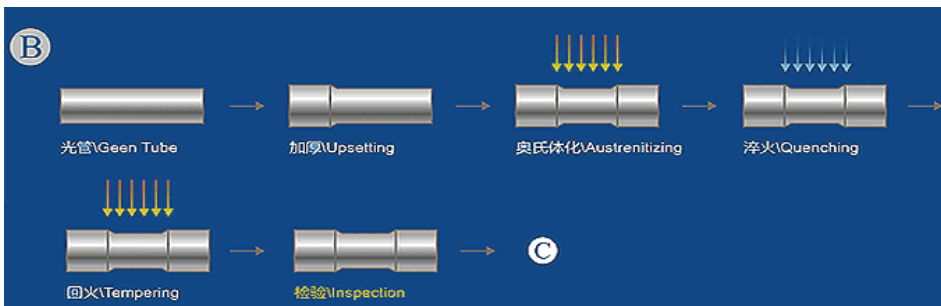
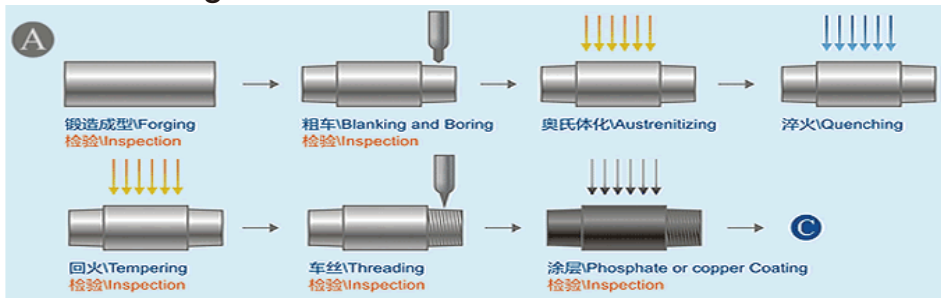
## DRILL PIPE

### Drill Pipe

Drill pipe is industrial tubular widely used for drilling operation. Jereh specially offers drill pipe available in various sizes and weights, and all drill pipe are manufactured strictly according to API spec 5D.

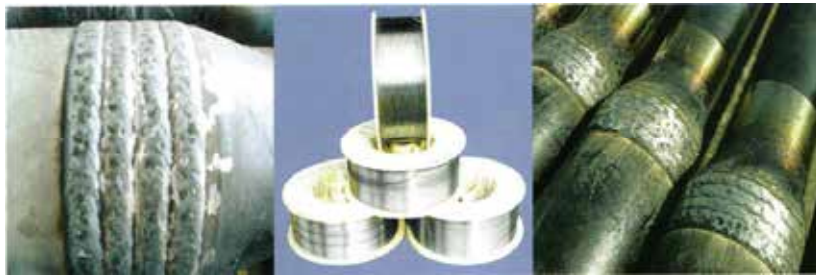


### Manufacturing Process:

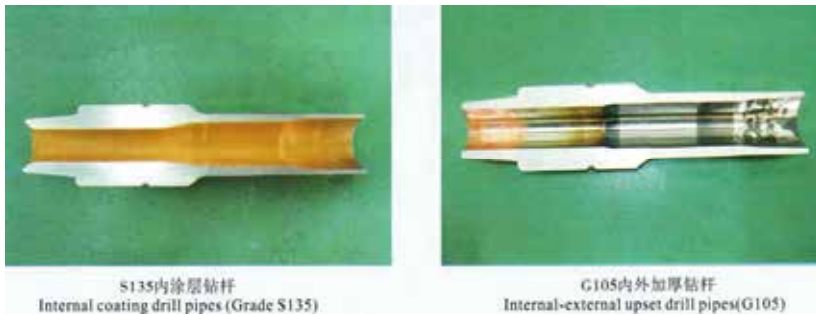


### Technical Specification of Drill Pipe

Item	Name	Standard	Pipe body					Tool Joint										Torsional Ration Pin to Drill pipe body	length
			OD in	Nominal weight lb/ft	Wall thickness in	Grade	Upper Type	RSC type	OD of Pin and Box in	ID of Pin in	Bevel Dia of Pin and Box Shoulder in	Pin tong Length in	Box tong Length in	OD of upper neck in					
1	Drill pipe	API 5DP	2.3/8	6.65	0.280	E	EU	NC26	2.3/8IF	3.3/8	1.3/4	3.17/64	7	8	2.9/16	1.10	R1, R2, R3		
2	Drill pipe	API 5DP	2.3/8	6.65	0.280	X	EU	NC26	2.3/8IF	3.3/8	1.3/4	3.17/64	7	8	2.9/16	0.87	R1, R2, R3		
3	Drill pipe	API 5DP	2.3/8	6.65	0.280	G	EU	NC26	2.3/8IF	3.3/8	1.3/4	3.17/64	7	8	2.9/16	0.79	R1, R2, R3		
4	Drill pipe	API 5DP	2.7/8	10.4	0.362	E	EU	NC31	2.7/8IF	4.1/8	2.1/8	3.61/64	7	9	3.3/16	1.03	R1, R2, R3		
5	Drill pipe	API 5DP	2.7/8	10.4	0.362	X	EU	NC31	2.7/8IF	4.1/8	2	3.61/64	7	9	3.3/16	0.90	R1, R2, R3		
6	Drill pipe	API 5DP	2.7/8	10.4	0.362	G	EU	NC31	2.7/8IF	4.1/8	2	3.61/64	7	9	3.3/16	0.82	R1, R2, R3		
7	Drill pipe	API 5DP	2.7/8	10.4	0.362	S	EU	NC31	2.7/8IF	4.3/8	1.5/8	3.61/64	7	9	3.3/16	0.82	R1, R2, R3		
8	Drill pipe	API 5DP	3.1/2	13.3	0.368	E	EU	NC38	3.1/2IF	4.3/4	2.11/16	4.37/64	8	10.1/2	3.7/8	0.98	R1, R2, R3		
9	Drill pipe	API 5DP	3.1/2	13.3	0.368	X	EU	NC38	3.1/2IF	5	2.9/16	4.37/64	8	10.1/2	3.7/8	0.87	R1, R2, R3		
10	Drill pipe	API 5DP	3.1/2	13.3	0.368	G	EU	NC38	3.1/2IF	5	2.7/16	4.37/64	8	10.1/2	3.7/8	0.86	R1, R2, R3		
11	Drill pipe	API 5DP	3.1/2	13.3	0.368	S	EU	NC38	3.1/2IF	5	2.7/16	4.37/64	8	10.1/2	3.7/8	0.86	R1, R2, R3		
12	Drill pipe	API 5DP	3.1/2	15.5	0.449	E	EU	NC38	3.1/2IF	5	2.9/16	4.37/64	8	10.1/2	3.7/8	0.97	R1, R2, R3		
13	Drill pipe	API 5DP	3.1/2	15.5	0.449	X	EU	NC38	3.1/2IF	5	2.7/16	4.37/64	8	10.1/2	3.7/8	0.83	R1, R2, R3		
14	Drill pipe	API 5DP	3.1/2	15.5	0.449	G	EU	NC38	3.1/2IF	5	2.1/8	4.37/64	8	10.1/2	3.7/8	0.90	R1, R2, R3		
15	Drill pipe	API 5DP	3.1/2	15.5	0.449	S	EU	NC40	4FH	5.1/2	2.1/4	5.1/64	7	10	3.7/8	0.87	R1, R2, R3		
16	Drill pipe	API 5DP	4	14	0.330	E	IU	NC40	4FH	5.1/4	2.13/16	5.1/64	7	10	4.3/16	1.01	R1, R2, R3		
17	Drill pipe	API 5DP	4	14	0.330	X	IU	NC40	4FH	5.1/4	2.11/16	5.1/64	7	10	4.3/16	0.86	R1, R2, R3		
18	Drill pipe	API 5DP	4	14	0.330	G	IU	NC40	4FH	5.1/2	2.7/16	5.1/64	7	10	4.3/16	0.93	R1, R2, R3		
19	Drill pipe	API 5DP	4	14	0.330	S	IU	NC40	4FH	5.1/2	2	5.1/64	7	10	4.3/16	0.87	R1, R2, R3		
20	Drill pipe	API 5DP	4	14	0.330	E	EU	NC46	4IF	6	3.1/4	5.23/32	7	10	4.1/2	1.43	R1, R2, R3		
21	Drill pipe	API 5DP	4	14	0.330	X	EU	NC46	4IF	6	3.1/4	5.23/32	7	10	4.1/2	1.13	R1, R2, R3		
22	Drill pipe	API 5DP	4	14	0.330	G	EU	NC46	4IF	6	3.1/4	5.23/32	7	10	4.1/2	1.02	R1, R2, R3		
23	Drill pipe	API 5DP	4	14	0.330	S	EU	NC46	4IF	6	3	5.23/32	7	10	4.1/2	0.94	R1, R2, R3		
24	Drill pipe	API 5DP	4.1/2	16.6	0.337	E	IEU	NC46	4IF	6.1/4	3.1/4	5.23/32	7	10	4.11/16	1.09	R1, R2, R3		
25	Drill pipe	API 5DP	4.1/2	16.6	0.337	X	IEU	NC46	4IF	6.1/4	3	5.23/32	7	10	4.11/16	1.01	R1, R2, R3		
26	Drill pipe	API 5DP	4.1/2	16.6	0.337	G	IEU	NC46	4IF	6.1/4	3	5.23/32	7	10	4.11/16	0.91	R1, R2, R3		
27	Drill pipe	API 5DP	4.1/2	16.6	0.337	S	IEU	NC46	4IF	6.1/4	2.3/4	5.23/32	7	10	4.11/16	0.81	R1, R2, R3		
28	Drill pipe	API 5DP	4.1/2	20	0.430	E	IEU	NC46	4IF	6.1/4	3	5.23/32	7	10	4.11/16	1.07	R1, R2, R3		
29	Drill pipe	API 5DP	4.1/2	20	0.430	X	IEU	NC46	4IF	6.1/4	2.3/4	5.23/32	7	10	4.11/16	0.96	R1, R2, R3		
30	Drill pipe	API 5DP	4.1/2	20	0.430	G	IEU	NC46	4IF	6.1/4	2.1/2	5.23/32	7	10	4.11/16	0.96	R1, R2, R3		
31	Drill pipe	API 5DP	4.1/2	20	0.430	S	IEU	NC46	4IF	6.1/4	2.1/4	5.23/32	7	10	4.11/16	0.81	R1, R2, R3		
32	Drill pipe	API 5DP	4.1/2	16.6	0.337	E	EU	NC50	4.1/2IF	6.5/8	3.3/4	6.1/16	7	10	5	0.97	R1, R2, R3		
33	Drill pipe	API 5DP	4.1/2	16.6	0.337	X	EU	NC50	4.1/2IF	6.5/8	3.1/2	6.1/16	7	10	5	0.88	R1, R2, R3		
34	Drill pipe	API 5DP	4.1/2	16.6	0.337	G	EU	NC50	4.1/2IF	6.5/8	3.1/2	6.1/16	7	10	5	0.88	R1, R2, R3		
35	Drill pipe	API 5DP	4.1/2	16.6	0.337	S	EU	NC50	4.1/2IF	6.5/8	3.1/2	6.1/16	7	10	5	0.81	R1, R2, R3		
36	Drill pipe	API 5DP	4.1/2	20	0.430	E	EU	NC50	4.1/2IF	6.5/8	3.5/8	6.1/16	7	10	5	1.02	R1, R2, R3		
37	Drill pipe	API 5DP	4.1/2	20	0.430	X	EU	NC50	4.1/2IF	6.5/8	3.1/2	6.1/16	7	10	5	0.96	R1, R2, R3		
38	Drill pipe	API 5DP	4.1/2	20	0.430	G	EU	NC50	4.1/2IF	6.5/8	3.1/2	6.1/16	7	10	5	0.86	R1, R2, R3		
39	Drill pipe	API 5DP	4.1/2	20	0.430	S	EU	NC50	4.1/2IF	6.5/8	3	6.1/16	7	10	5	0.87	R1, R2, R3		
40	Drill pipe	API 5DP	5	19.5	0.362	E	IEU	NC50	4.1/2IF	6.5/8	3.3/4	6.1/16	7	10	5.1/8	0.92	R1, R2, R3		
41	Drill pipe	API 5DP	5	19.5	0.362	X	IEU	NC50	4.1/2IF	6.5/8	3.1/2	6.1/16	7	10	5.1/8	0.86	R1, R2, R3		
42	Drill pipe	API 5DP	5	19.5	0.362	G	IEU	NC50	4.1/2IF	6.5/8	3.1/4	6.1/16	7	10	5.1/8	0.89	R1, R2, R3		
43	Drill pipe	API 5DP	5	19.5	0.362	S	IEU	NC50	4.1/2IF	6.5/8	2.3/4	6.1/16	7	10	5.1/8	0.86	R1, R2, R3		
44	Drill pipe	API 5DP	5	25.6	0.500	E	IEU	NC50	4.1/2IF	6.5/8	3.1/2	6.1/16	7	10	5.1/8	0.86	R1, R2, R3		
45	Drill pipe	API 5DP	5	25.6	0.500	X	IEU	NC50	4.1/2IF	6.5/8	3	6.1/16	7	10	5.1/8	0.86	R1, R2, R3		
46	Drill pipe	API 5DP	5	25.6	0.500	G	IEU	NC50	4.1/2IF	6.5/8	2.3/4	6.1/16	7	10	5.1/8	0.87	R1, R2, R3		
47	Drill pipe	API 5DP	5	19.5	0.362	E	IEU		5.1/2FH	7	3.3/4	6.23/32	8	10	5.1/8	1.53	R1, R2, R3		
48	Drill pipe	API 5DP	5	19.5	0.362	X	IEU		5.1/2FH	7	3.3/4	6.23/32	8	10	5.1/8	1.21	R1, R2, R3		
49	Drill pipe	API 5DP	5	19.5	0.362	G	IEU		5.1/2FH	7	3.3/4	6.23/32	8	10	5.1/8	1.09	R1, R2, R3		
50	Drill pipe	API 5DP	5	19.5	0.362	S	IEU		5.1/2FH	7.1/14	3.1/2	6.23/32	8	10	5.1/8	0.98	R1, R2, R3		
51	Drill pipe	API 5DP	5	25.6	0.500	E	IEU		5.1/2FH	7	3.1/2	6.23/32	8	10	5.1/8	1.21	R1, R2, R3		
52	Drill pipe	API 5DP	5	25.6	0.500	X	IEU		5.1/2FH	7	3.1/2	6.23/32	8	10	5.1/8	0.85	R1, R2, R3		
53	Drill pipe	API 5DP	5	25.6	0.500	G	IEU		5.1/2FH	7.1/14	3.1/2	6.23/32	8	10	5.1/8	0.99	R1, R2, R3		
54	Drill pipe	API 5DP	5	25.6	0.500	S	IEU		5.1/2FH	7.1/14	3.1/4	6.23/32	8	10	5.1/8	0.83	R1, R2, R3		
55	Drill pipe	API 5DP	5.1/2	21.9	0.361	E	IEU		5.1/2FH	7	4	6.23/32	8	10	5.11/16	1.11	R1, R2, R3		
56	Drill pipe	API 5DP	5.1/2	21.9	0.361	X	IEU		5.1/2FH	7	3.3/4	6.23/32	8	10	5.11/16	0.98	R1, R2, R3		
57	Drill pipe	API 5DP	5.1/2	21.9	0.361	G	IEU		5.1/2FH	7.1/14	3.1/2	6.23/32	8	10	5.11/16	1.02	R1, R2, R3		
58	Drill pipe	API 5DP	5.1/2	21.9	0.361	S	IEU		5.1/2FH	7.1/2	3	7.3/32	8	10	5.11/16	0.96	R1, R2, R3		
59	Drill pipe	API 5DP	5.1/2	24.7	0.415	E	IEU		5.1/2FH	7	4	6.23/32	8	10	5.11/16	0.99	R1, R2, R3		
60	Drill pipe	API 5DP	5.1/2	24.7	0.415	X	IEU		5.1/2FH	7.1/14	3.1/2	6.23/32	8	10	5.11/16	1.01	R1, R2, R3		
61	Drill pipe	API 5DP	5.1/2	24.7	0.415	G	IEU		5.1/2FH	7.1/14	3.1/2	6.23/32	8	10	5.11/16	0.92	R1, R2, R3		
62	Drill pipe	API 5DP	5.1/2	24.7	0.415	S	IEU		5.1/2FH	7.1/2	3	7.3/32	8	10	5.11/16	0.86	R1, R2, R3		
63	Drill pipe	API 5DP	6.5/8	25.2	0.330	E	IEU		6.5/8FH	8	5	7.45/64	8	11	5.15/16	1.04	R1, R2, R3		
64	Drill pipe	API 5DP	6.5/8	25.2	0.330	X	IEU		6.5/8FH	8	5	7.45/64	8	11	5.15/16	0.82	R1, R2, R3		
65	Drill pipe	API 5DP	6.5/8	25.2	0.330	G	IEU		6.5/8FH	8.1/4	4.3/4	7.45/64	8	11	5.15/16	0.87	R1, R2, R3		
66	Drill pipe	API 5DP	6.5/8	25.2	0.330	S	IEU		6.5/8FH	8.1/2	4.1/4	7.45/64	8	11	5.15/16	0.86	R1, R2, R3		
67	Drill pipe	API 5DP	6.5/8	27.7	0.362	E	IEU		6.5/8FH	8	5	7.45/64	8	11	5.15/16	0.96	R1, R2, R3		
68	Drill pipe	API 5DP	6.5/8	27.7	0.362	X	IEU		6.5/8FH	8.1/4	4.3/4	7.45/64	8	11	5.15/16	0.89	R1, R2, R3		
69	Drill pipe	API 5DP	6.5/8	27.7	0.362	G	IEU		6.5/8FH	8.1/4	4.3/4	7.45/64	8	11	5.15/16	0.81	R1, R2, R3		
70	Drill pipe	API 5DP	6.5/8	27.7	0.362	S	IEU		6.5/8FH	8.1/2	4.1/4	7.45/64	8	11	5.15/16	0.80	R1, R2, R3		



**HARDBANDING**



**INNER COATING**

Index-2016.10-V1/EN

Copyright © Jereh Global All rights reserved.



**Jereh Global Development LLC**

Add: No.9 Jereh Road, Laishan District, Yantai, P. R. China

Tel: 0535-6765628 6765630

Fax: 0535-6723171 6723172

Email: [petroleum@jereh.com](mailto:petroleum@jereh.com)

Http: [www.jereh.com](http://www.jereh.com)